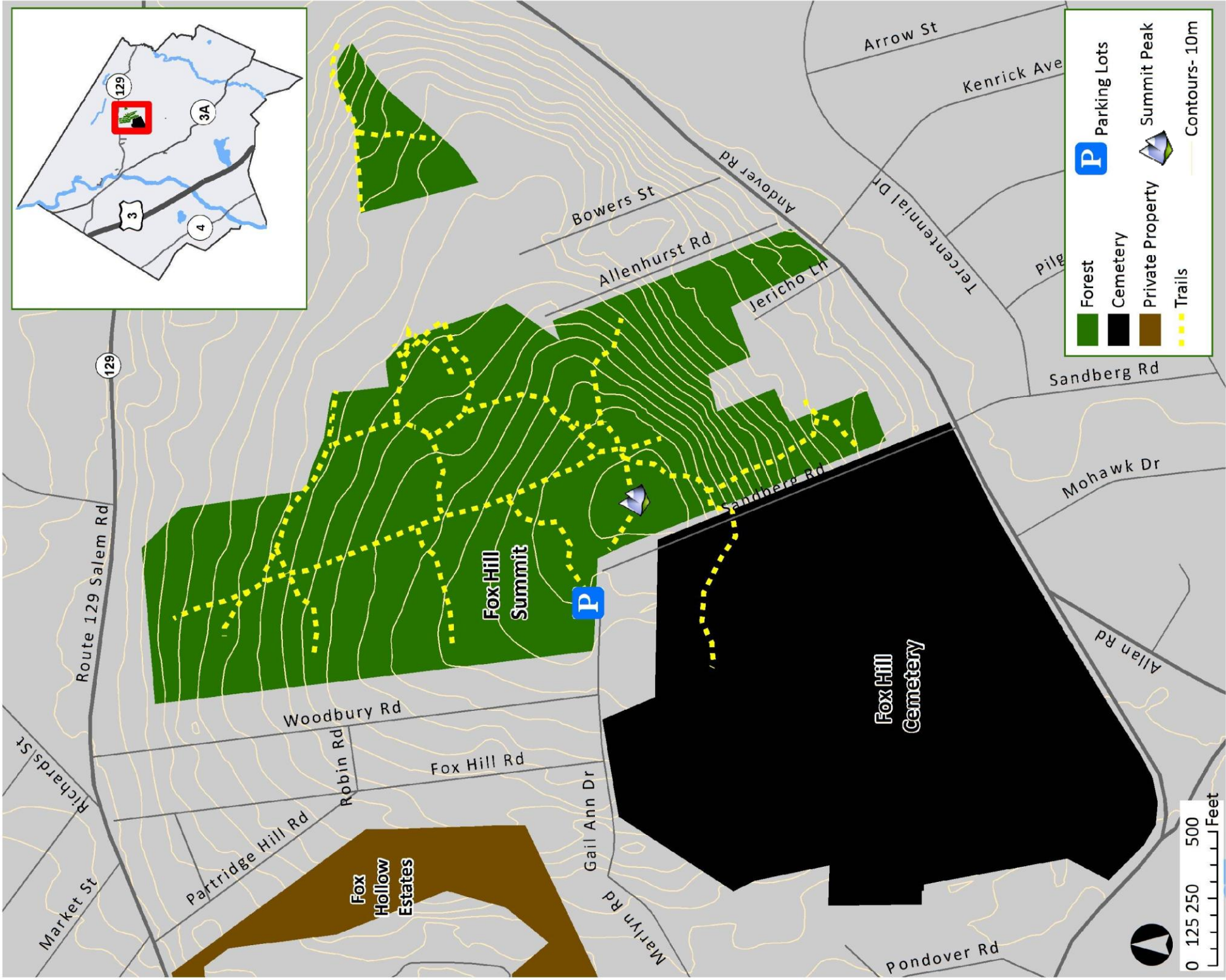


# Fox Hill Summit & Fox Hill Cemetery



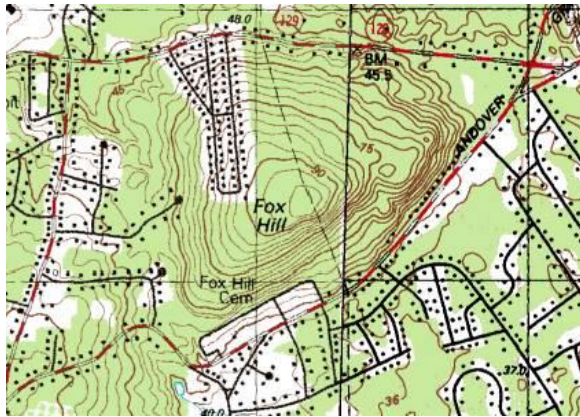
## Conservation Land

We invite you to enjoy the many joys this land has to offer the residents and visitors of Billerica.

- Hiking Trails
- Snow Shoeing & Cross-Country Skiing
- Mountain Biking
- Nature Study & Photography
- Dog Walking
- Picnic Spots
- Summit Views

## Rules and Regulations

- No Littering: Carry in-carry out grounds
- No plant or species removal
- No motorized vehicles
- No camping or camp fires
- Dogs must be leashed at all times
- No horses allowed at Fox Hill



## Directions

Fox Hill is not very easily accessible by car.

There is a very small dirt pull off located at the end of Gail Ann Drive on the left that fits 3-4 cars.

However, the best mode of transportation for accessing Fox Hill is via bike or walking.

## Fox Hill Summit

Fox Hill Summit is a mountain summit in Middlesex County, located in the northeast region of Billerica. Fox Hill has noted elevations and is one of the two major summits in town. The other summit is Gilson Hill State Forest.

Fox Hill climbs to 315 feet (96.01 meters) above sea level and commands extensive views of the surrounding country. Wachusett and the New Ipswich Mountains can be seen in the distance.



**Billerica Conservation Commission**  
365 Boston Road, Billerica, Mass.  
(978) 671- 0096  
[www.Town.Billerica.Ma.Us](http://www.Town.Billerica.Ma.Us)

# Town of Billerica Conservation & Recreation Lands

Fox Hill Summit  
Fox Hill Cemetery  
40 Acres

