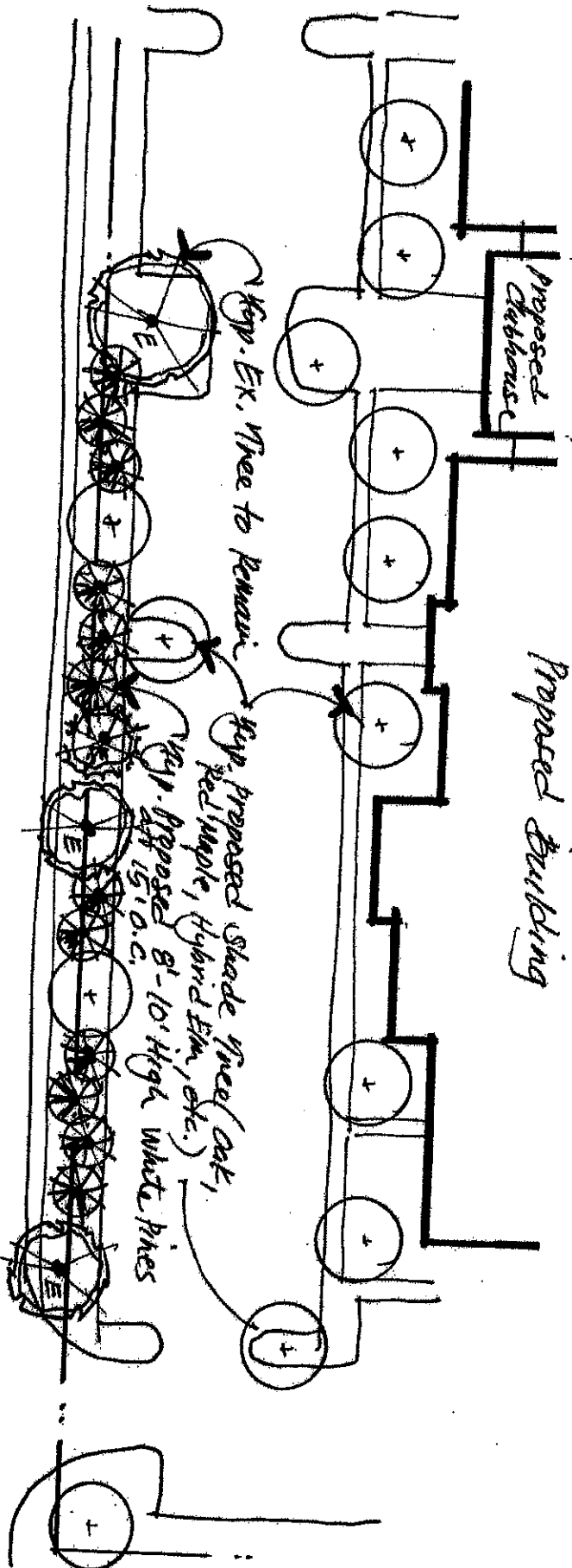
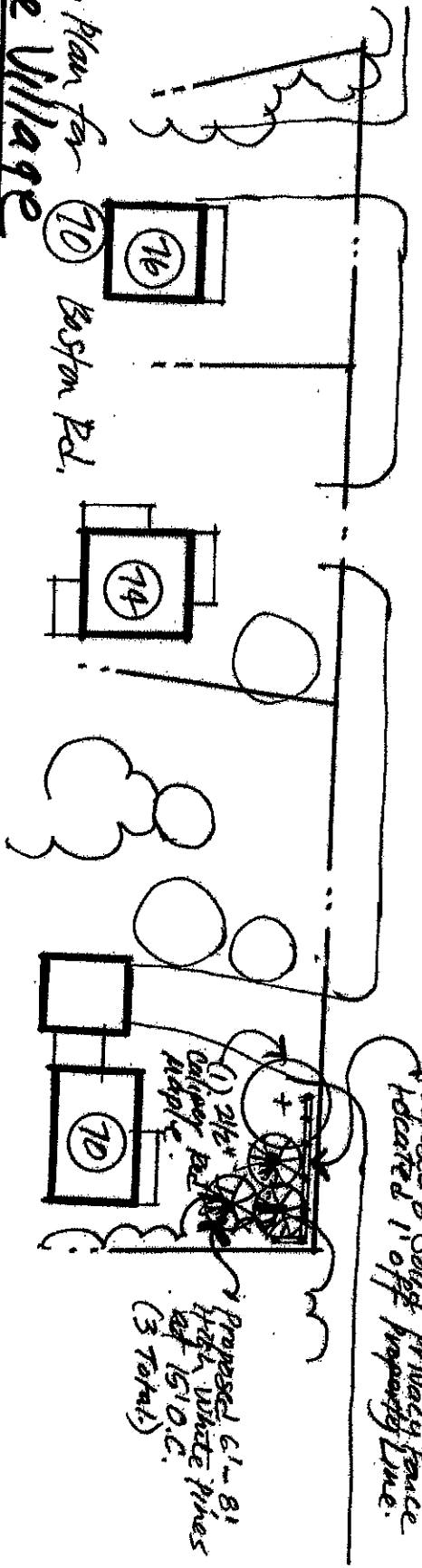


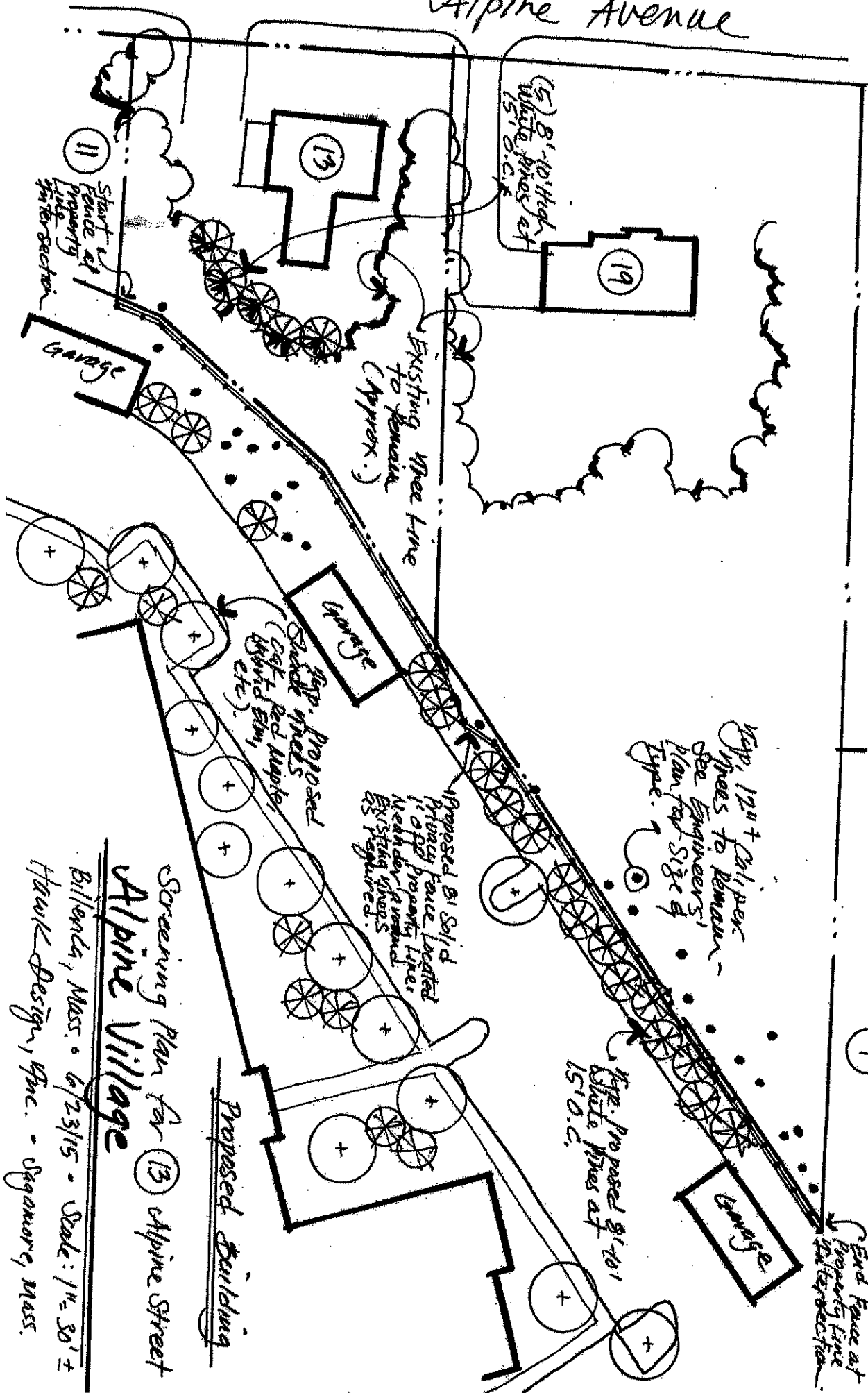
Proposed Building



Screening Plan for
Alpine Village
 Billanca, Mass. • 6/23/15 • Scale: 1" = 38' ±
 Hawk Design, Inc.



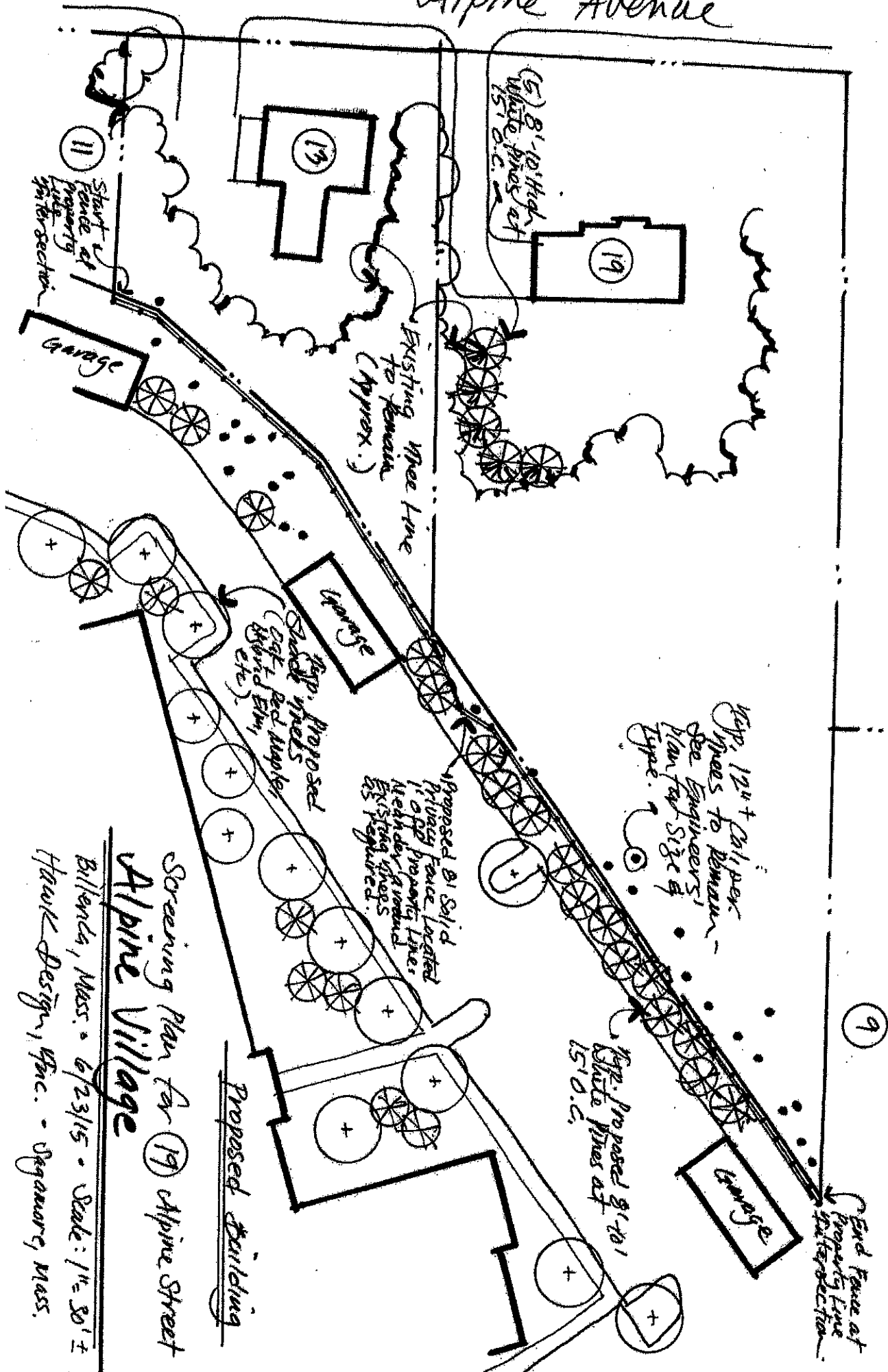
Alpine Avenue



Screening Plan for 13 Alpine Street
 Alpine Village

Billenck, Mass. 6/23/15 - Scale: 1" = 30' ±
 Hawk Design, Inc. - Sagamore, Mass.

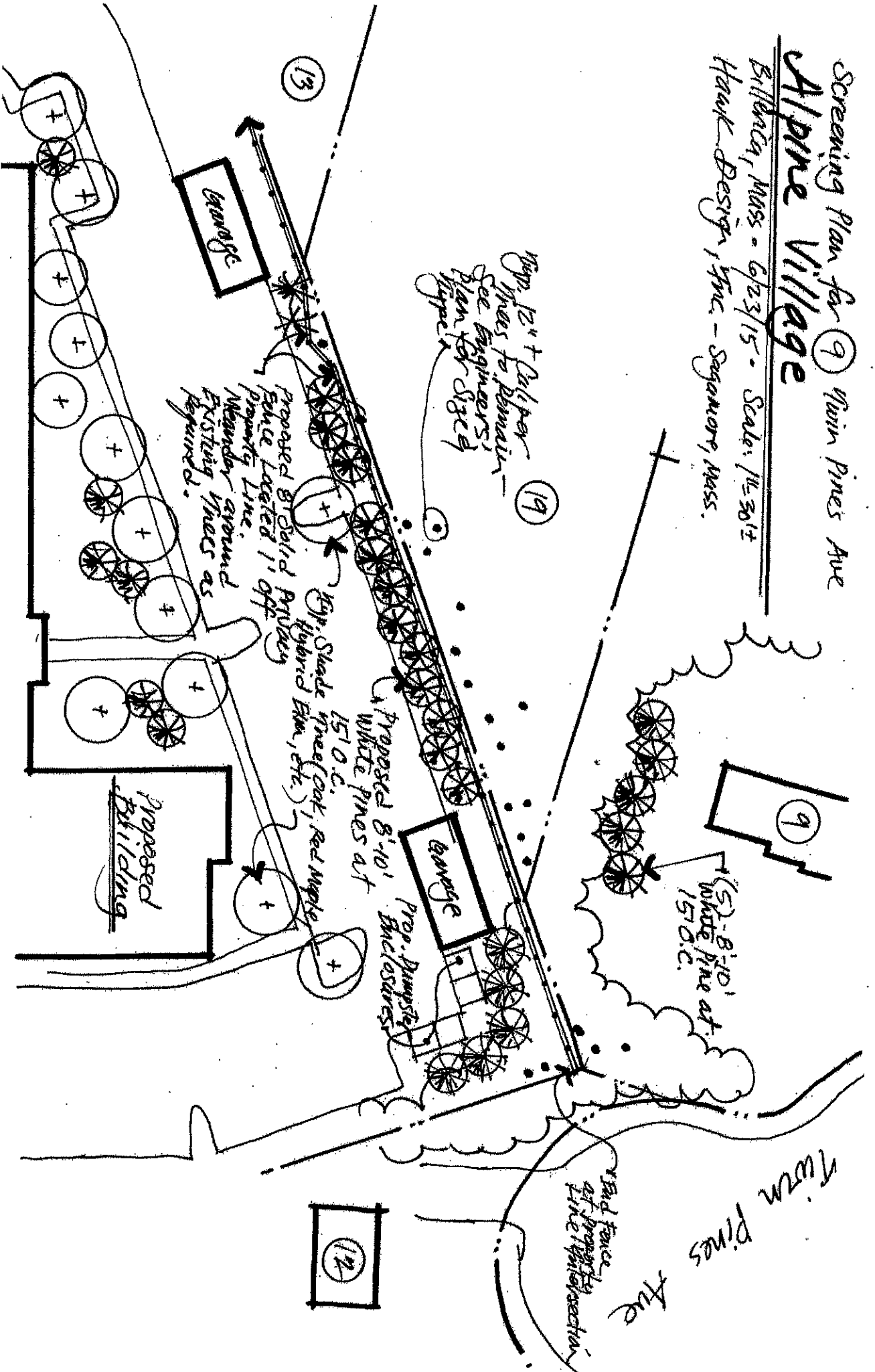
Alpine Avenue



Screening Plan for 19 Alpine Street
 Billenda, Mass. • 6/23/15 • Scale: 1" = 30' ±
 Hawk Design, Inc. - Ogunquit, Mass.

Screening Plan for 9 Twin Pines Ave Alpine Village

Billiana, Mass. - 6/23/15 - Scale: 1/4" = 30' ±
Hauk Design, Inc. - Sagamore, Mass.



Prop. 12" + D.C. + 10' + 15' Pines to Remain - See Engineers' Plan for Sited Type

Proposed 8' x 10' White Pines at 15' O.C. (5) - 8' x 10' White Pine at 15' O.C.

Prop. Shade Trees (Oak, Red Maple, Hybrid Elm, etc.)

Prop. Pumping Enclosures

Bad Fence at Property Line (White) Section

Twin Pines Ave

Proposed Building

Garage

Garage

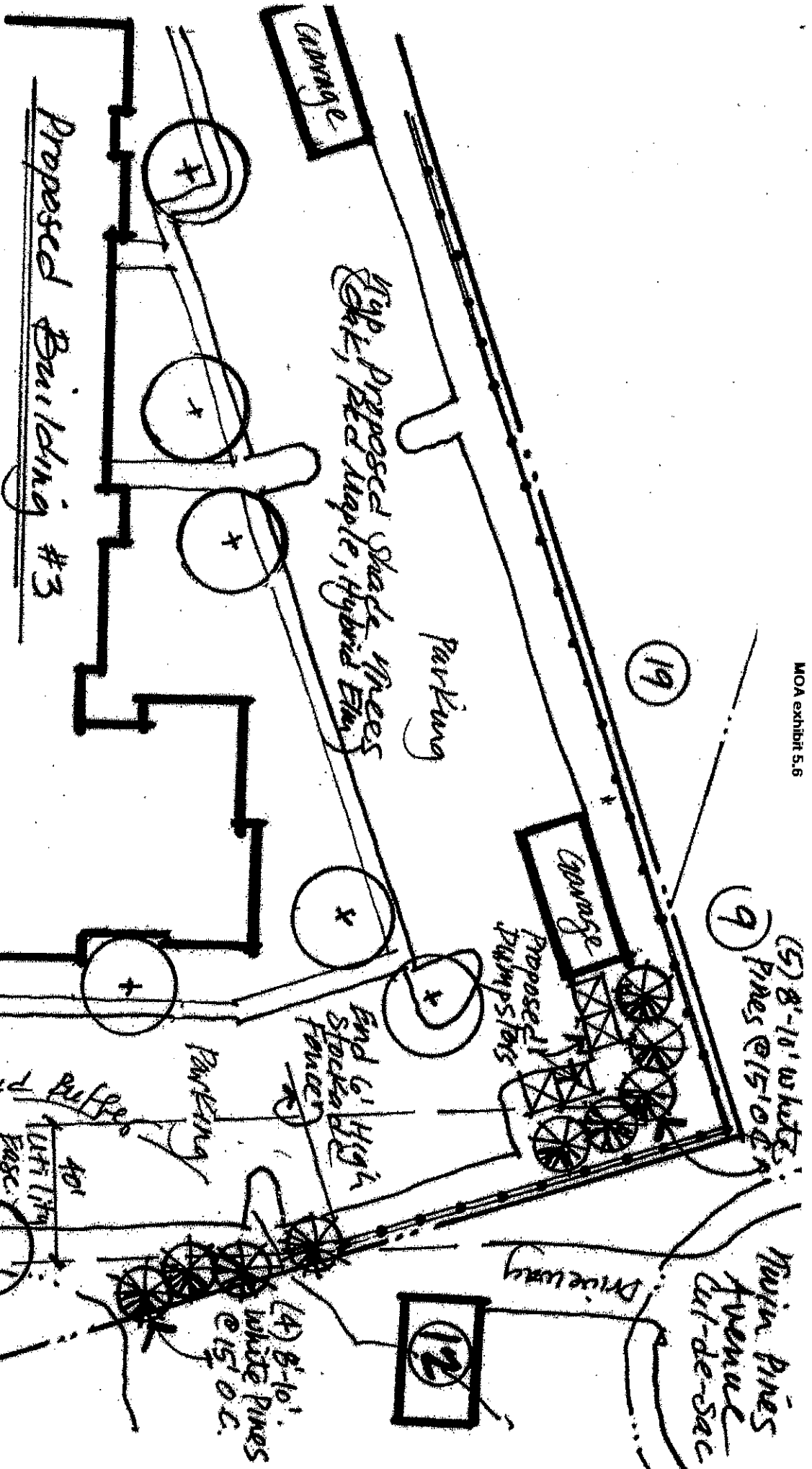
13

19

9

12

Screening Plan for 12 Twin Pines Ave.
Alpine Village
 Billerica, Mass. 01815. SCALE: 1" = 40'
 North
 Frank Design, Inc.; Sagamore, Mass.



19

9 (5) 8'-10' White Pines @ 15' O.C.

12

(4) 8'-10' White Pines @ 15' O.C.

50' Wetland Buffer

40' Lift (17' High) Esc.

Wetland

Twin Pines Avenue
Arl-de-Sac

Drive Way

End 6' High Stocked Fences

Proposed Pump Stations

Garage

Parking

Proposed Shade Trees (Oak, Red Maple, Hybrid Elm)

Proposed Building #3

Screening Plan for 12 Twin Pines Ave.

Alpine Village

Billerica, Mass. 01815. SCALE: 1" = 40'
North
Frank Design, Inc.; Sagamore, Mass.